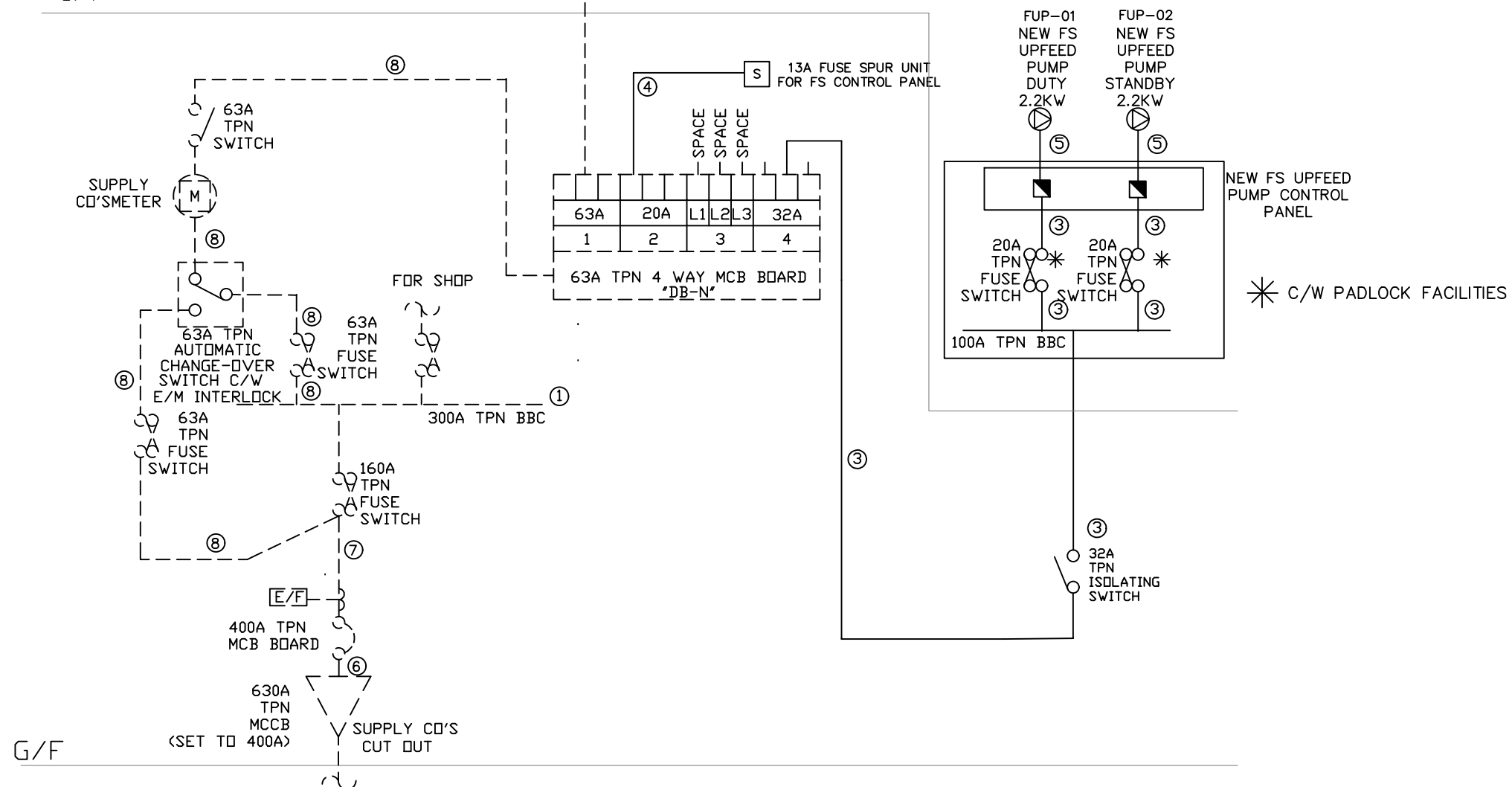


12/F


- 
- 
- 2/F-11/F

1/F

CABLE SCHEDULE		
①		4 X 16mm <sup>2</sup> 1/C FIRE RESISTING CABLE TO BS6387 CAT. CWZ
②		4 X 6 mm <sup>2</sup> 1/C FIRE RESISTING CABLE TO BS6387 CAT. CWZ
③		4 X 4 mm <sup>2</sup> 1/C FIRE RESISTING CABLE TO BS6387 CAT. CWZ
④		2 X 2.5 mm <sup>2</sup> 1/C FIRE RESISTING CABLE TO BS6387 CAT. CWZ
⑤		3 X 4 mm <sup>2</sup> 1/C FIRE RESISTING CABLE TO BS6387 CAT. CWZ
⑥		4 X 240mm <sup>2</sup> 1/C PVC CABLE
⑦		4 X 70mm <sup>2</sup> 1/C PVC CABLE
⑧		4 X 16mm <sup>2</sup> 1/C PVC CABLE
⑨		6 X 4 mm <sup>2</sup> 1/C FIRE RESISTING CABLE TO BS6387 CAT. CWZ



SCHMATIC POWER SUPPLY WIRING DIAGRAM FOR F.S.IMPROVEMENT WORKS(NOT TO SCALE)

FSI CONTRACTOR:  
 GLOBAL ENG CONSULTANTS LTD  
 ROOM 902,9/F,SILICON TOWER,  
 88 LARCH STREET,TAI KOK TSUI,KLN.  
 Email:globalconhk@gmail.com  
 Tel:31881924 Fax:31862946

PROJECT:

TITLE:  
 SCHEMATIC POWER SUPPLY WIRING DIAGRAM FOR FIRE SAFETY IMPROVEMENT WORKS

SCALE: NOT TO SCALE @A3	DRAWN BY: K.H.
DATE: 30-01-2020	DESIGNED BY: T.W.
DWG. NO: FS/02	CHECKED BY: T.W.

CONTRACT NO. SHEET:

REVISION: A